



DOMIproject F24

LISTA PEZZI DI RICAMBIO

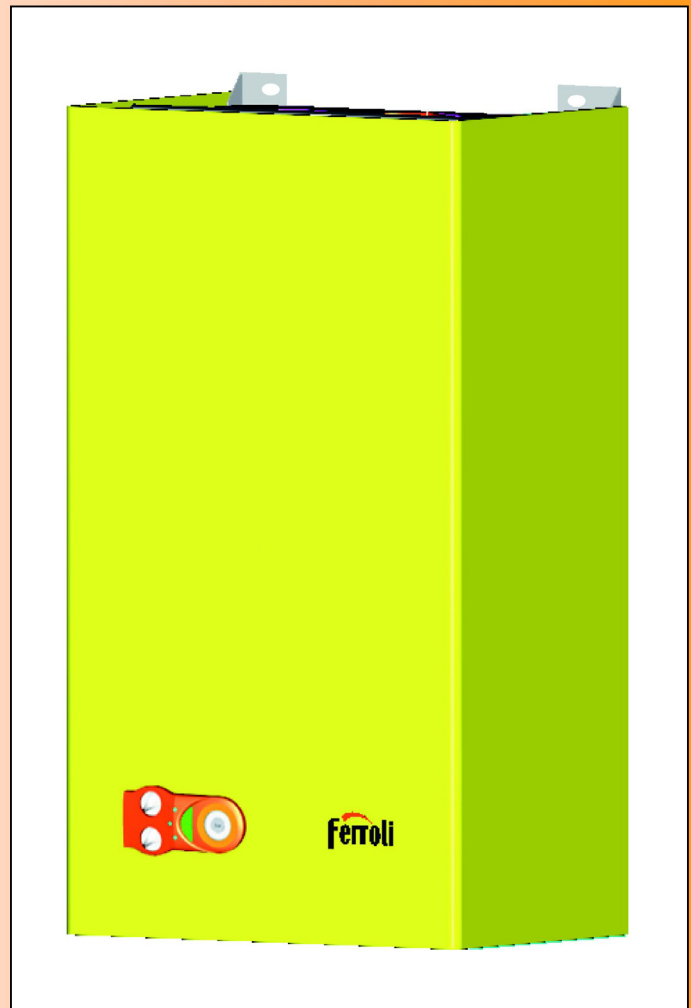
SPARE PART LIST

ERSATZSTEILE

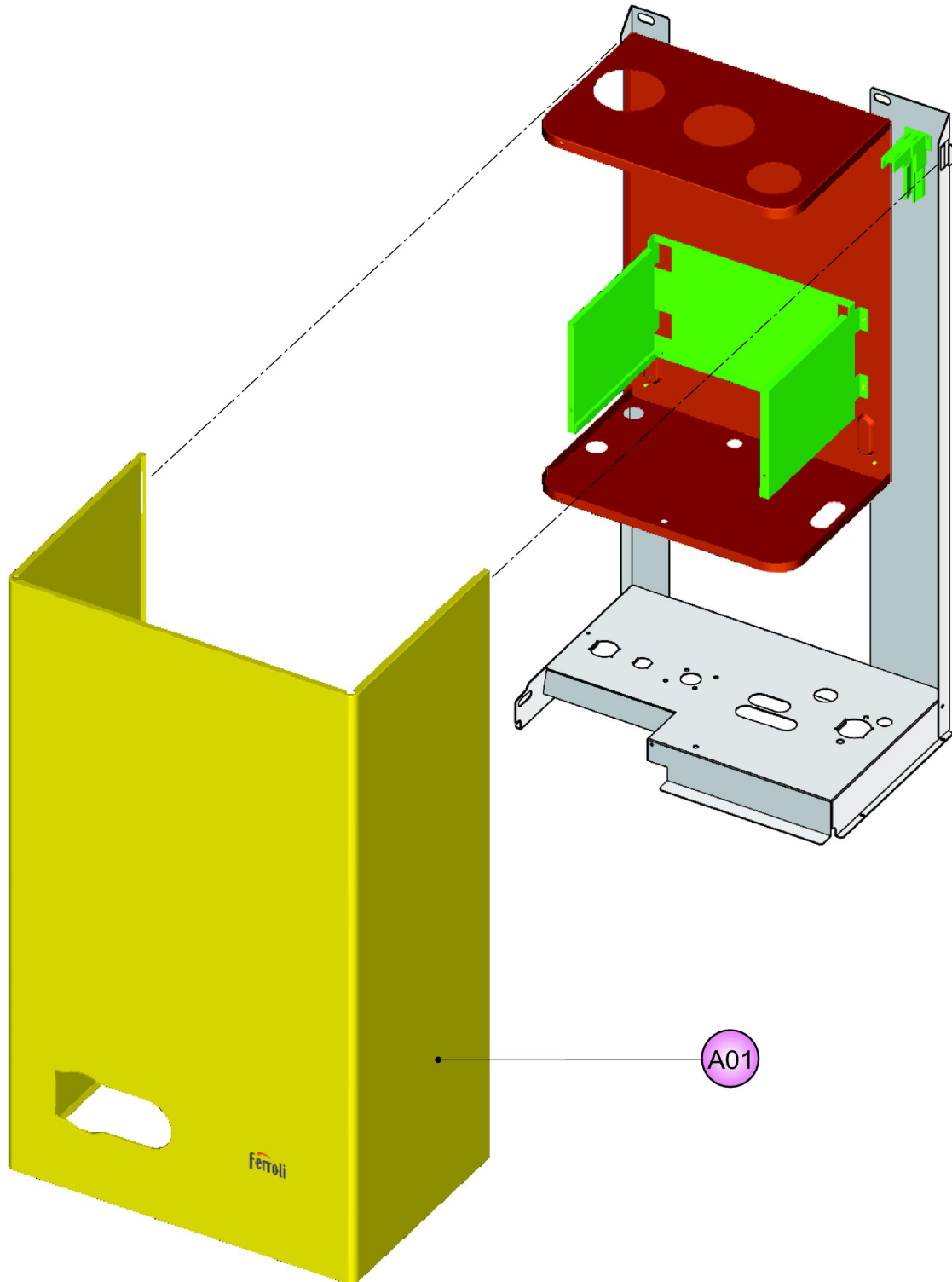
LIJST ONDERDELEN

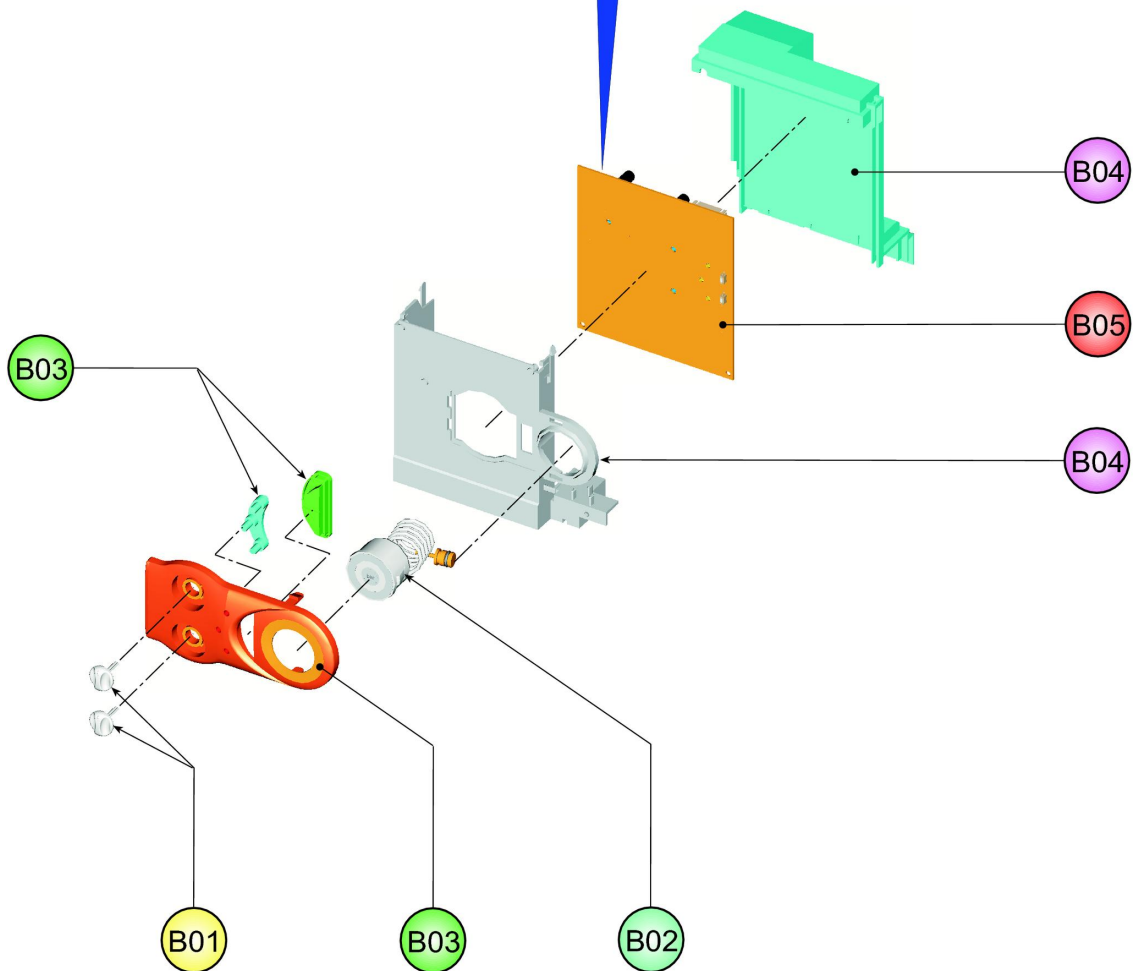
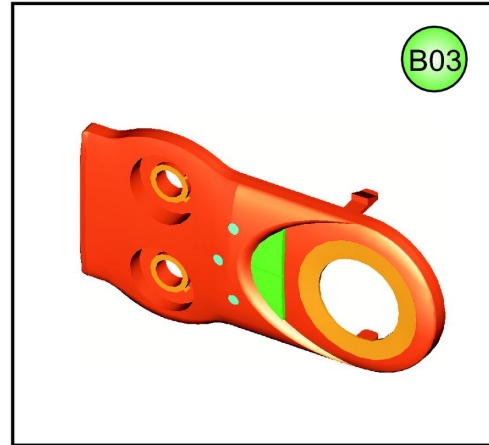
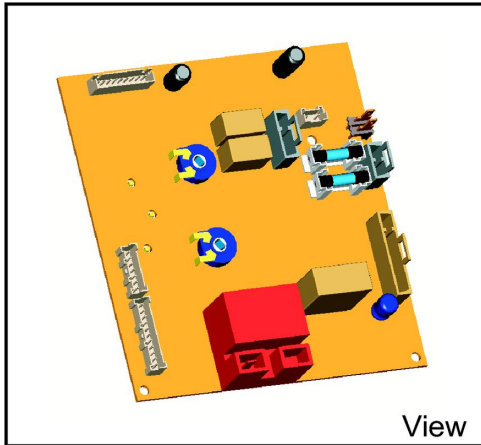
LISTE PIECES DETACHES

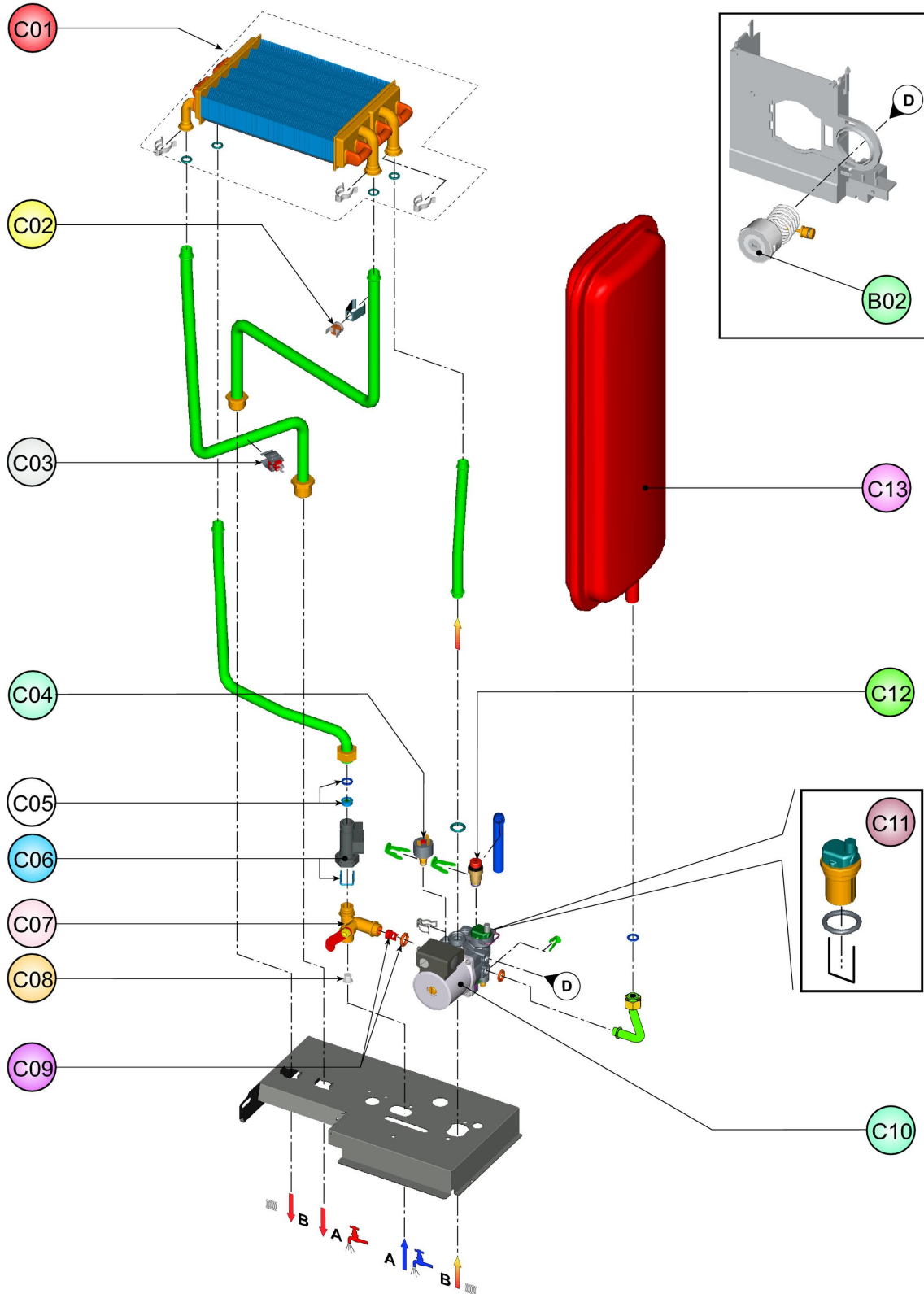
LISTA PIEZAS DE REPUESTO

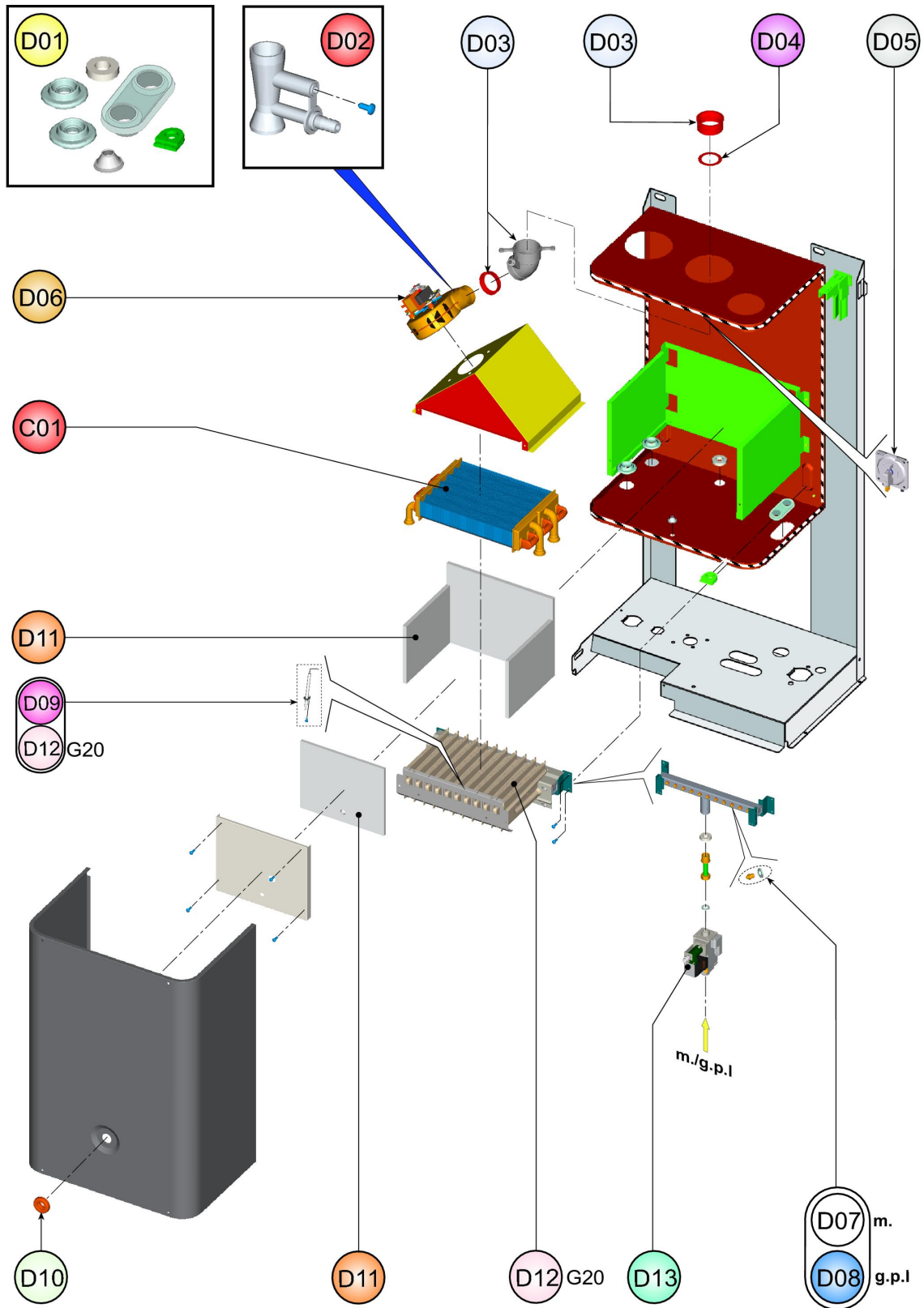


CODICE	EDIZIONE	MERCATO
30K0282000	09/02/2006	A2









LISTA PEZZI 0ABF4B2A		DOMIproject F24 m. (A2)	
POS.	CODICE	DESC.	QT.
A01	39819490	KIT MANTELLO (31115950)	1
B01	39819500	KIT 2 MANOPOLE (35012090)	1
B02	39818210	KIT IDROMETRO (36402070)	1
B03	39819510	KIT MASCHERINA (35011990)	1
B04	39819520	KIT SCATOLA EL. (35012240)	1
B05	39819530	KIT SCHEDA EL. (36507990)	1
C01	39819540	KIT SCAMB.BITERM. (37404110)	1
C02	39819550	KIT SONDA TEMP. (36200730)	1
C03	39810230	KIT SONDA TEMP.SAN. (36200640)	1
C04	39818260	KIT PRESSOST.H2O (39404710)	1
C05	39813010	KIT 5 REG.PORT.10Lt. (36902080)	1
C06	39818550	KIT FLUSSOST.ELTEK (36400710)	1
C07	39819560	KIT RUBIN.CARICO (36902140)	1
C08	39813230	KIT 5 FILTRI FLUSS. (39402940)	1
C09	39818230	KIT 5 VALV.N/R (39404740)	1
C10	39818450	KIT POMPA AO/FX3FPL (39404220)	1
C11	39818220	KIT V.ARIA (39404380-39404730)	1
C12	39818270	KIT VALV.SIC. (39404720)	1
C13	39819570	KIT VASO ESP.6Lt. (36800650)	1
D01	39819580	KIT GUARN.CALD. Sr.ABF4	1
D02	39808471	KIT PRESE (35101310-35101323)	1
D03	39817990	KIT CURVA USC.FUMI (33301610)	1
D04	39819460	KIT DIAFR.FUMI Di.43-47	1
D05	39817510	KIT PRESS.DIFF.ARIA (36402050)	1
D06	39817550	KIT VENTIL. (36601851)	1
D07	39819590	KIT 11 UG.1,35 m. (34009821)	1
D09	39819430	KIT ELETTRODO ACC. (36702890)	1
D10	39811330	KIT SPIA SILICONE (35102230)	1
D11	39819610	KIT ISOL.CAM.COMB. Sr.ABF4	1
D12	39819630	KIT BRUC.11R.m. (37608910)	1
D13	39819620	KIT VALV.GAS (36800610)	1

LISTA PEZZI 0ABF4D2A		DOMIproject F24 gpl (A2)	
POS.	CODICE	DESC.	QT.
A01	39819490	KIT MANTELLO (31115950)	1
B01	39819500	KIT 2 MANOPOLE (35012090)	1
B02	39818210	KIT IDROMETRO (36402070)	1
B03	39819510	KIT MASCHERINA (35011990)	1
B04	39819520	KIT SCATOLA EL. (35012240)	1
B05	39819530	KIT SCHEDA EL. (36507990)	1
C01	39819540	KIT SCAMB.BITERM. (37404110)	1
C02	39819550	KIT SONDA TEMP. (36200730)	1
C03	39810230	KIT SONDA TEMP.SAN. (36200640)	1
C04	39818260	KIT PRESSOST.H2O (39404710)	1
C05	39813010	KIT 5 REG.PORT.10Lt. (36902080)	1
C06	39818550	KIT FLUSSOST.ELTEK (36400710)	1
C07	39819560	KIT RUBIN.CARICO (36902140)	1
C08	39813230	KIT 5 FILTRI FLUSS. (39402940)	1
C09	39818230	KIT 5 VALV.N/R (39404740)	1
C10	39818450	KIT POMPA AO/FX3FPL (39404220)	1
C11	39818220	KIT V.ARIA (39404380-39404730)	1
C12	39818270	KIT VALV.SIC. (39404720)	1
C13	39819570	KIT VASO ESP.6Lt. (36800650)	1
D01	39819580	KIT GUARN.CALD. Sr.ABF4	1
D02	39808471	KIT PRESE (35101310-35101323)	1
D03	39817990	KIT CURVA USC.FUMI (33301610)	1
D04	39819460	KIT DIAFR.FUMI Di.43-47	1
D05	39817510	KIT PRESS.DIFF.ARIA (36402050)	1
D06	39817550	KIT VENTIL. (36601851)	1
D08	39819600	KIT 11 UG.0,79 gpl (34013300)	1
D09	39819430	KIT ELETTRODO ACC. (36702890)	1
D10	39811330	KIT SPIA SILICONE (35102230)	1
D11	39819610	KIT ISOL.CAM.COMB. Sr.ABF4	1
D13	39819620	KIT VALV.GAS (36800610)	1

<p><u>DESCRIZIONE MODIFICHE:</u></p> <p>_____</p> <p>_____</p> <p>_____</p> <p>_____</p>	<p><u>NOTE TECNICHE:</u></p>	<div style="border: 1px solid black; padding: 10px; margin: 0 auto; width: 80%;"> <p>Firma</p> <p>DI CARLO Cristian</p> </div>
-------------------------------------------------------------------------------------------------	-------------------------------------	--------------------------------------------------------------------------------------------------------------------------------